



Rates for 2018

Thank you for your interest shown in Sycamore Avenue Treehouse Accommodation, a Dinner, Bed and Breakfast establishment

Accommodation Details:

Please enquire with regard to the availability of the dates requested for your booking.

Check-in time: **14h00 to 19h00**

Check-out time: **10h00**

Specials;

Certain weeks of the year discounts are offered from Sunday to Thursday

Terms to secure a booking:

A 50% deposit, or the total of the first night's accommodation, whichever is the greater, is required. **For a one night stay, the full amount is payable in advance, on booking.**

One night bookings are available on request, but generally not over long weekends and weekends of local events, such as Valen nes, Midmar Mile etc.

Accommodation includes a Dinner, Bed and Breakfast, a three course mini buffet dinner and a three course breakfast is served.

Dinner is served at 19h00 during the summer, spring and autumn months, but at 18h00 during winter (i.e. 1 June - 31 August) and during quiet week days

Breakfast is served from 08h00 to 09h30.

Please arrange for your special dietary requirements when booking.

For catering purposes, please arrange with management ahead of time, should dinner not be required.

Sycamore is a licensed liquor venue with a fully stocked bar. There is a corkage fee, if you bring your own bottles of alcohol.

You are welcome to relax with a drink before supper or watch sporting events on DSTV at the bar.

Management
Sycamore Avenue Treehouses.

Tel:- 033 263 5009

Cell:- 082 692 4541





Treehouses 2018



Out of Season: **R 895** pppn (sharing) incl. Dinner, Bed & Breakfast.

High Season (Public & School Holidays) and Long Weekends: **R 965** pppn (sharing).

Peak Season (7th December to 8th January 2019): **R 995** pppn (sharing).

ALL tariffs include dinner, bed and breakfast.

Children 3 to 11 years old only pay half price.

Children under 3 years old stay free.



COUNTRY COTTAGES 2018



Out of Season: **R 665** pppn (sharing).

High Season: (Public & School Holidays) and Long Weekends: **R 695** pppn (sharing).

Peak Season: (7th December to 8th January 2019): **R 745** pppn (sharing).

ALL Tariffs included dinner, bed and breakfast.

Children from 3 to 11 years old only pay half price.

Children under 3 years old stay free.

Please be advised:

Self-catering is **NOT OFFERED**, however there are braai facilities outside the Cottages.

All Treehouses and Country Cottages have kettles, tea and coffee facilities. Please note that most units do **NOT** have TVs/Radios in them, as we believe in being as close to nature as possible.

Please note that it is a non-smoking establishment but smoking outside is permitted.

Licensed to serve alcohol. A corkage fee is charged, should you bring your own bottle.





The Romantic Treehouse For Two



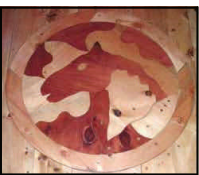
This is our smallest, quirkiest Treehouse, built onto a tree whose generous branches provide support and a leafy retreat from the sun. Take it easy in the hammock on the platform, and catch the sunset views of the Drakensberg. For the cooler times, there is a fireplace inside that supplies warmth and good cheer. Indulge yourselves in the private Jacuzzi Spa Bath.



This Treehouse is a favourite among our Honey-mooners.

The Faraway Treehouse For Two

Our newest Treehouse, built on two levels into an ancient Sycamore tree. Beautifully hand-sculptured, coloured flowers adorn the walls. There are two decks on which to enjoy sundowners and marvel at the beauty of the Drakensberg. The bedroom has a fireplace, and the glow of the flames will enhance your enjoyment of the queen size bed on the chillier nights. Take in the wonderful Drakensberg views from the com-



Pegasus Treehouse For Two

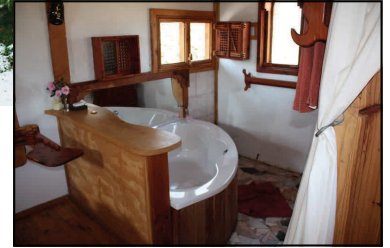
This Treehouse has an Equestrian theme. The artful wooden spiral staircase leads into a large room, with comfortable arm-chairs focusing on a fireplace. The queen-sized bed rests on a raised platform, and a door leads out onto a balcony deck overlooking a paddock, with the Drakensberg in the background. The warm wooden ensuite Bathroom has a - Jacuzzi Spa bath and a glassed shower.



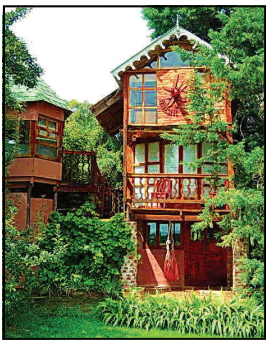


The Bottle Treehouse For Two

A charming wooden Treehouse with iron cladding, it has a queen-sized bed in a bedroom that includes a 6-jet Jacuzzi Spa Bath. Leading off the main room, the patio deck also houses a glassed Indoor/ Outdoor shower. The comfortable lounge features a fireplace and funky Nguni cow pictures. Take in the Drakensberg views from the upstairs deck.



Fantasy Treehouse A Family Treehouse for Four



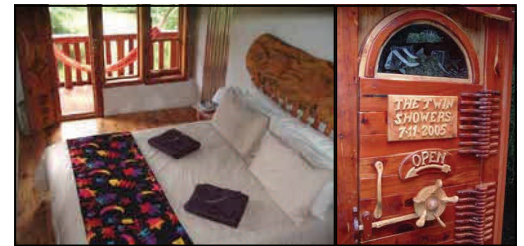
This Treehouse sleeps two adults and two children, and has three levels. On the bottom level is a sitting room with fireplace, which also boasts a large wooden chess set. The main bedroom has a glassed shower in it, and there is a toilet. The kids' room has its own toilet as well. An aerial walkway leads you to your separate, private Jacuzzi Spa Bath (the Spa in the Sky)



Planequarium Family Treehouse for Six



Stars and fishes accent this larger Treehouse, which can sleep two couples and two children. A fireplace waits to cast a cheerful glow in the comfortable lounge area, and your hammock awaits you on the covered outside deck. An aerial bridge leads from the main Treehouse to an adjacent tower, that houses both a Jacuzzi Spa bathroom and a double shower room.



COUNTRY COTTAGES

Just off the avenue of sycamore Trees, two quaint English style country cottages share an enclosed garden, with patio and hammock chairs. Each cottage sleeps 4. Each has a lounge, a cosy fireplace. Both have glass door showers, but Country Cottage 1 also has a Jacuzzi Spa Bath.

